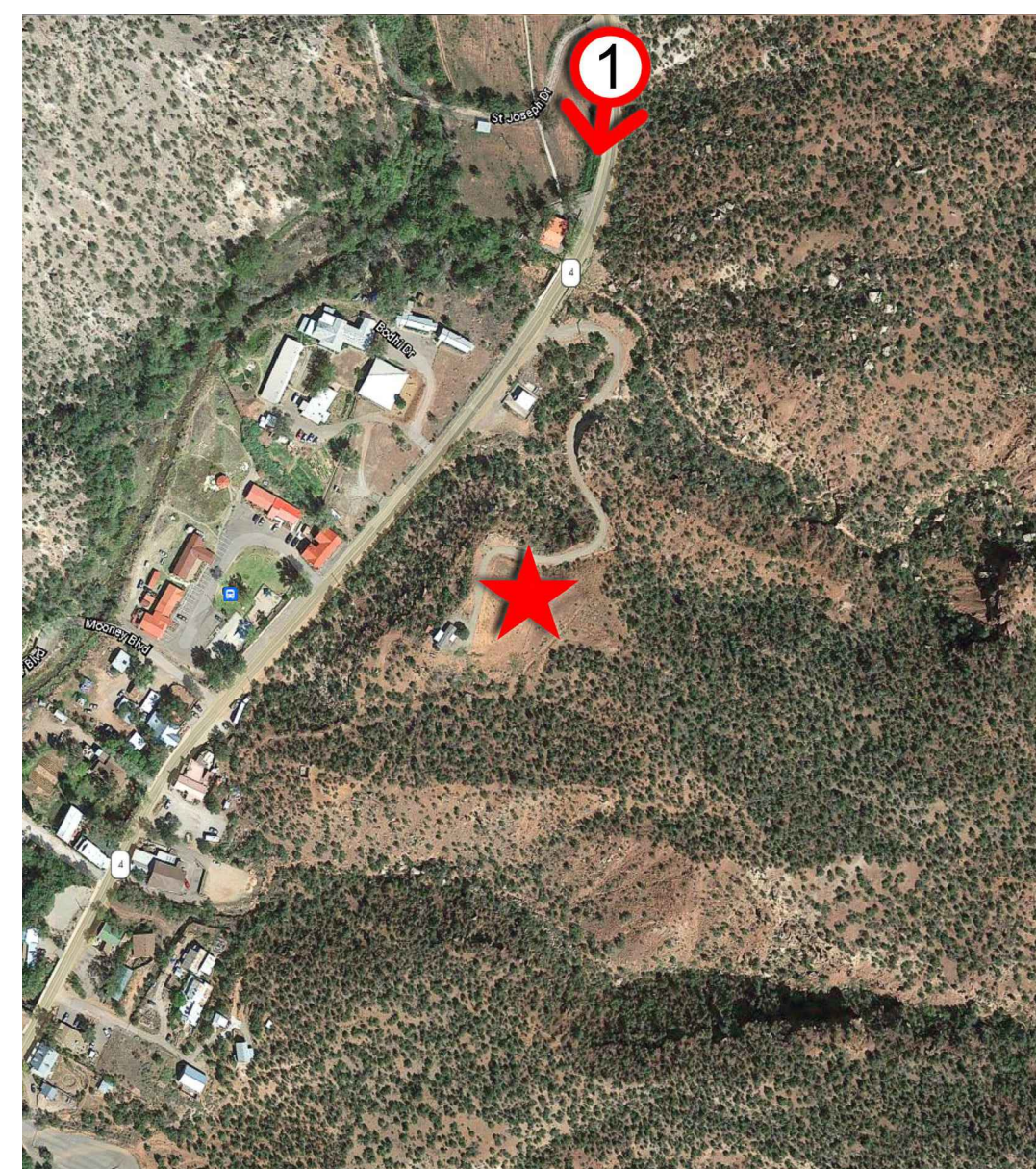
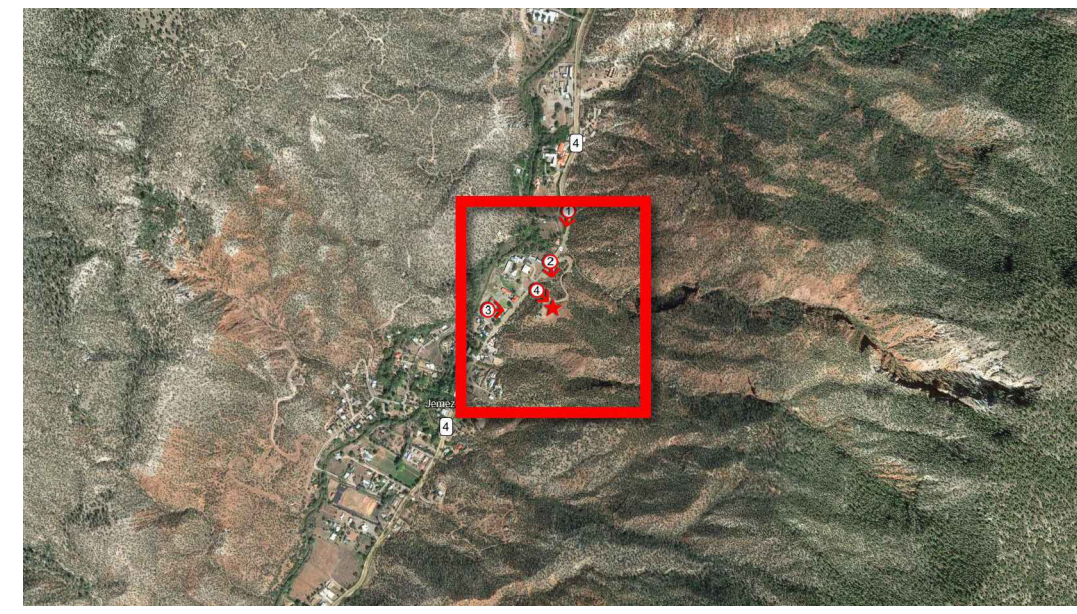
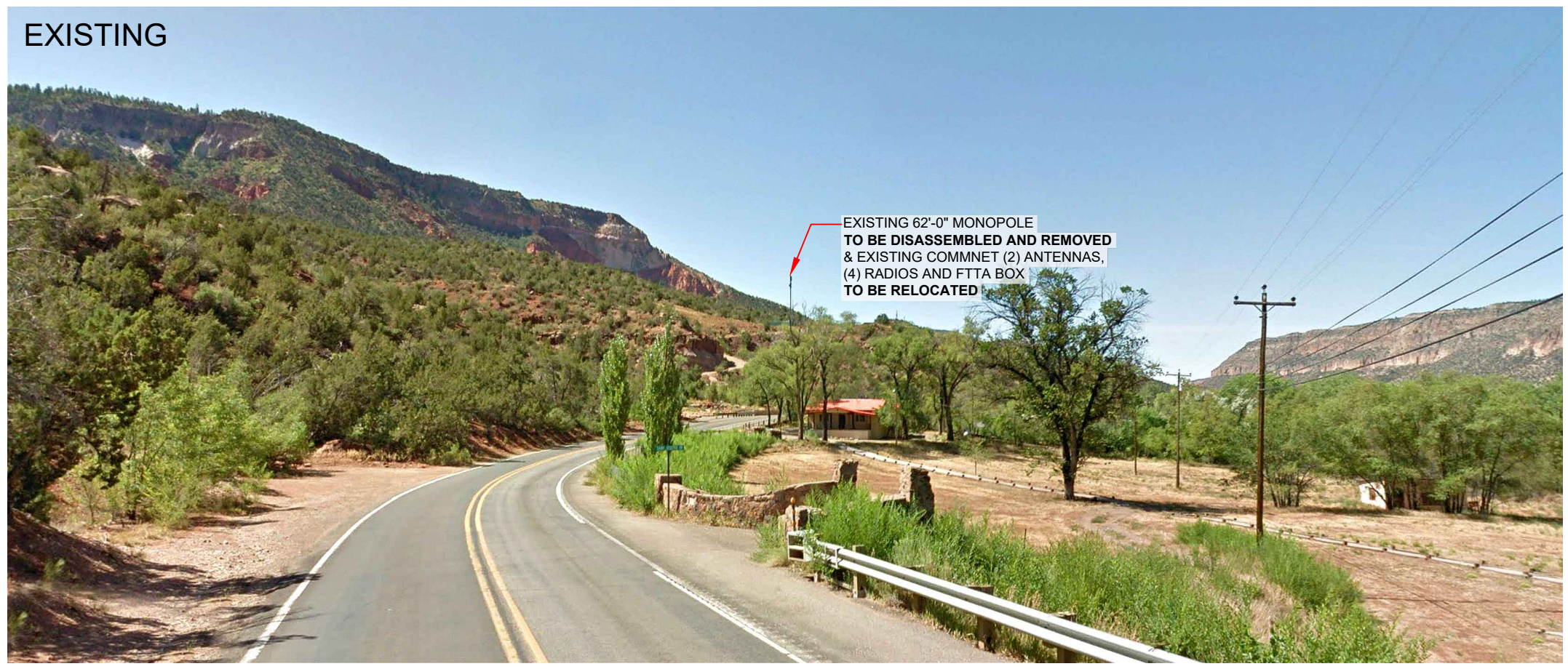


PHOTOSIMULATION VIEWPOINT 1

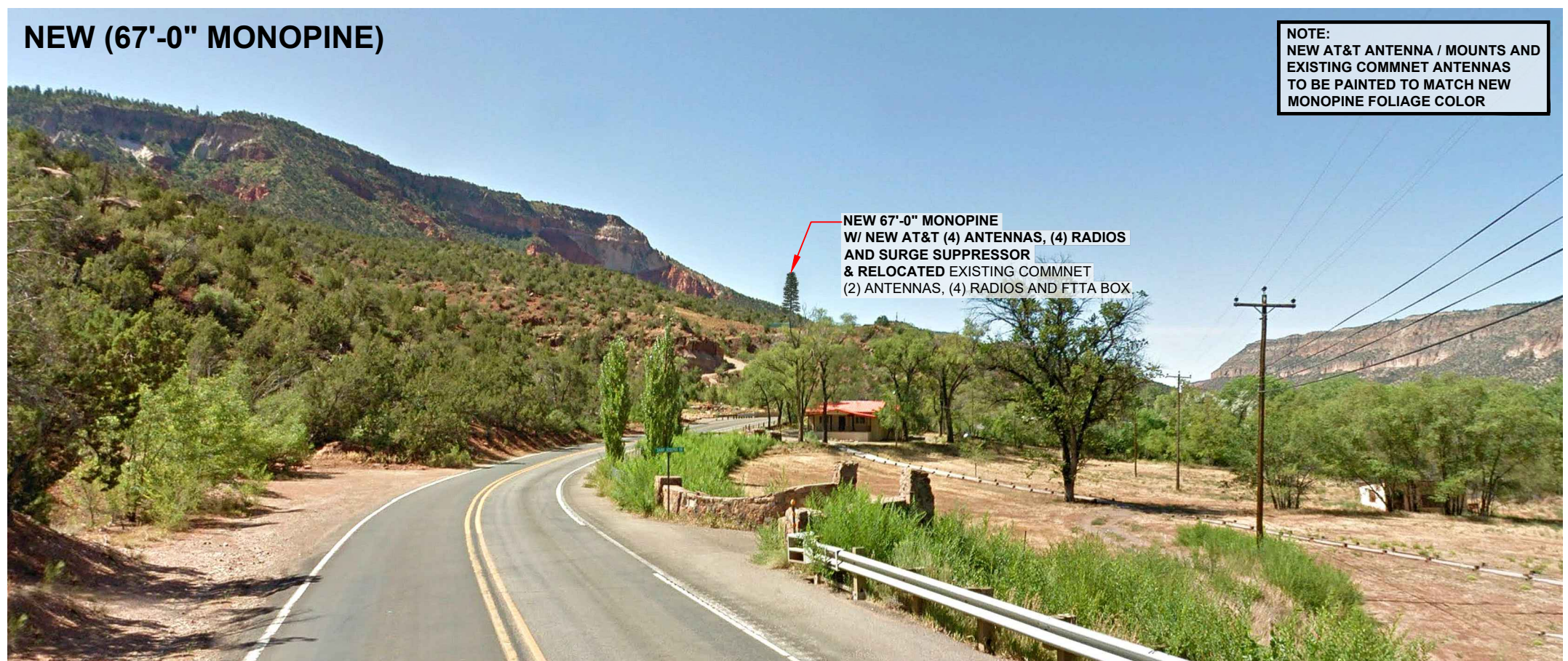


EXISTING



EXISTING 62'-0" MONOPOLE
TO BE DISASSEMBLED AND REMOVED
& EXISTING COMMNET (2) ANTENNAS,
(4) RADIOS AND FTTA BOX
TO BE RELOCATED

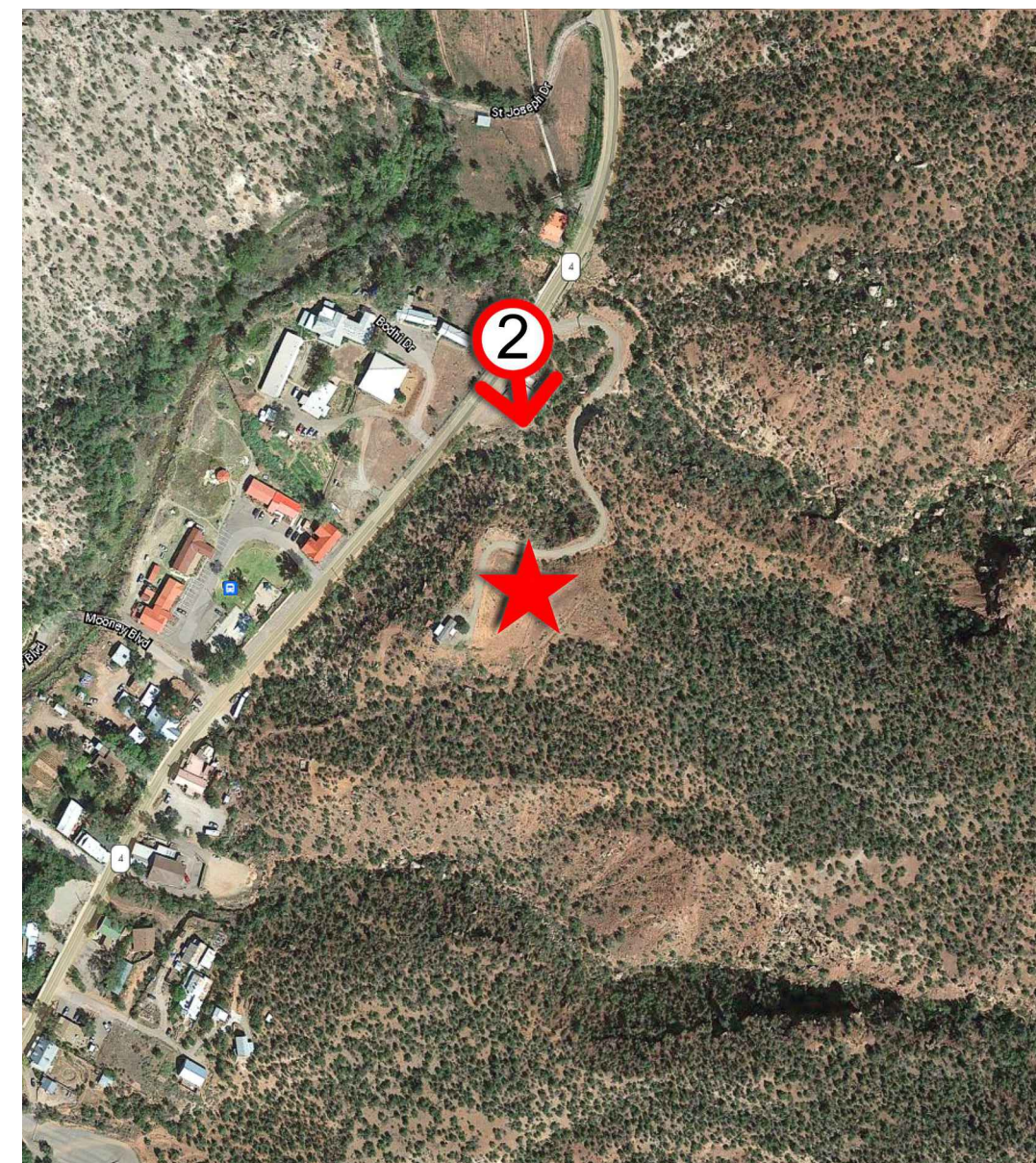
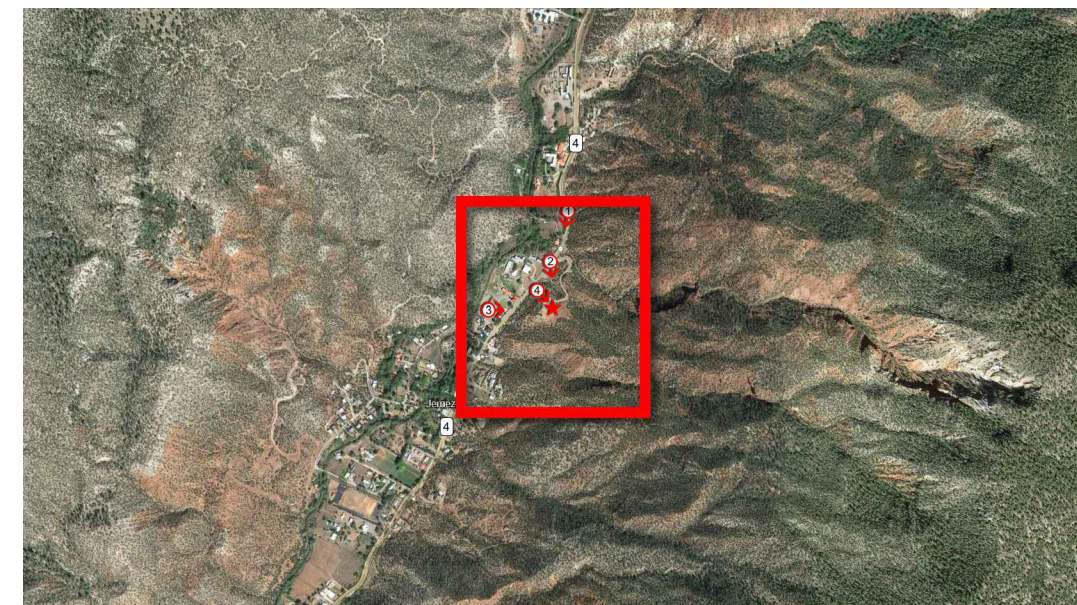
NEW (67'-0" MONOPINE)



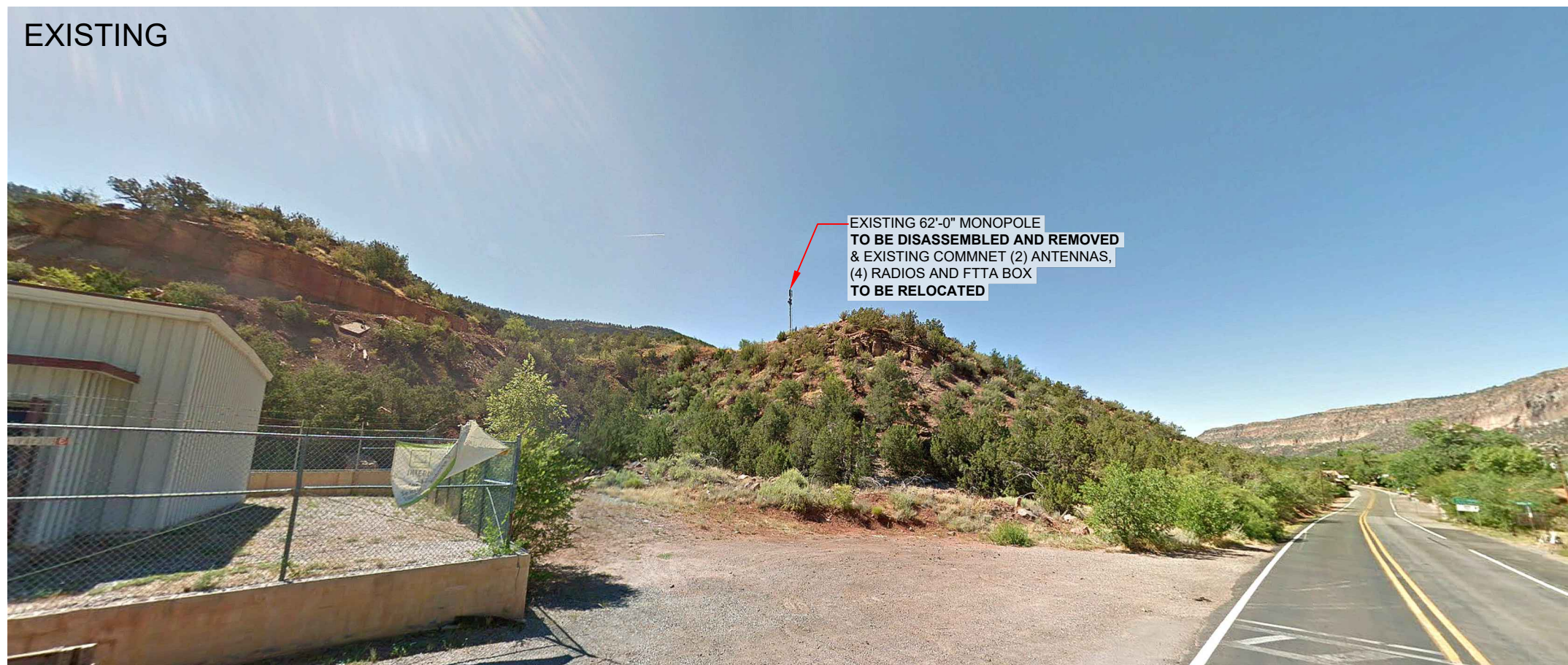
NEW 67'-0" MONOPINE
W/ NEW AT&T (4) ANTENNAS, (4) RADIOS
AND SURGE SUPPRESSOR
& RELOCATED EXISTING COMMNET
(2) ANTENNAS, (4) RADIOS AND FTTA BOX

NOTE:
NEW AT&T ANTENNA / MOUNTS AND
EXISTING COMMNET ANTENNAS
TO BE PAINTED TO MATCH NEW
MONOPINE FOLIAGE COLOR

PHOTOSIMULATION VIEWPOINT 2

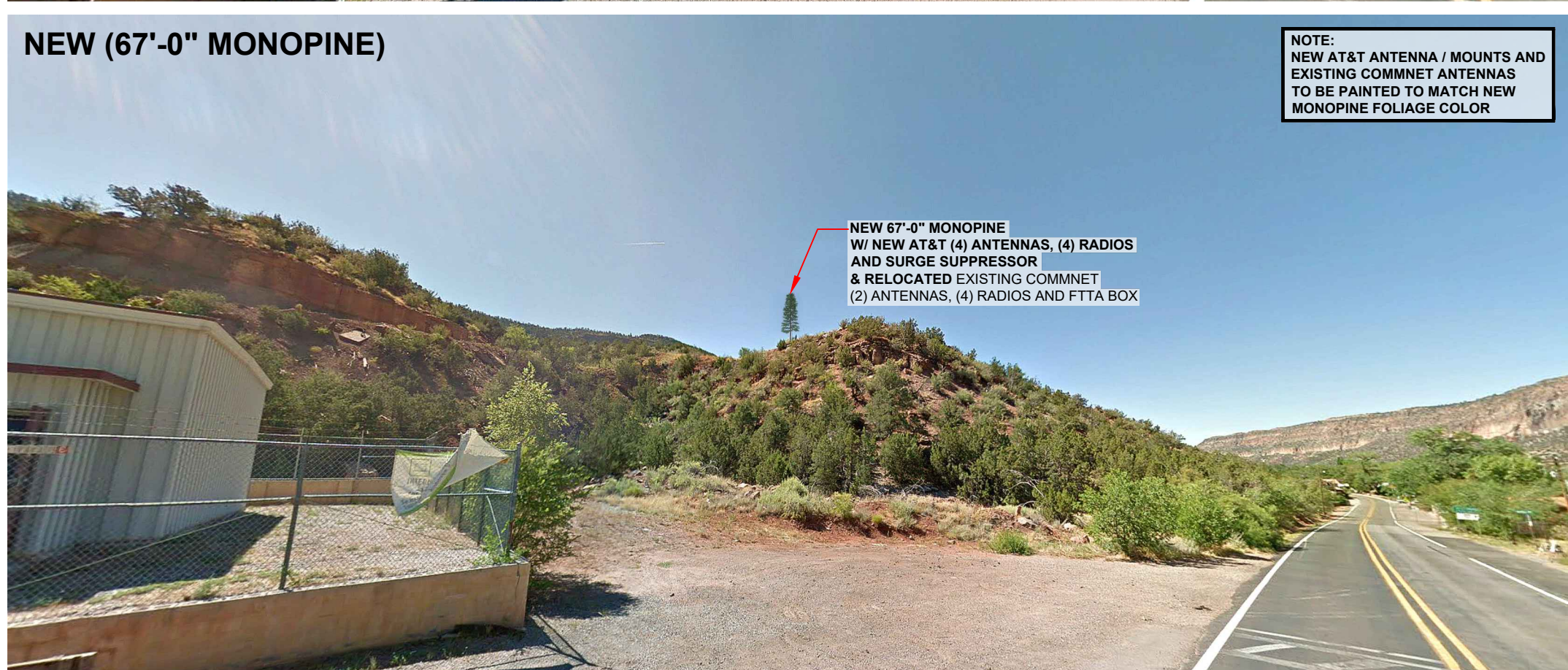


EXISTING



EXISTING 62'-0" MONOPOLE
TO BE DISASSEMBLED AND REMOVED
& EXISTING COMMNET (2) ANTENNAS,
(4) RADIOS AND FTTA BOX
TO BE RELOCATED

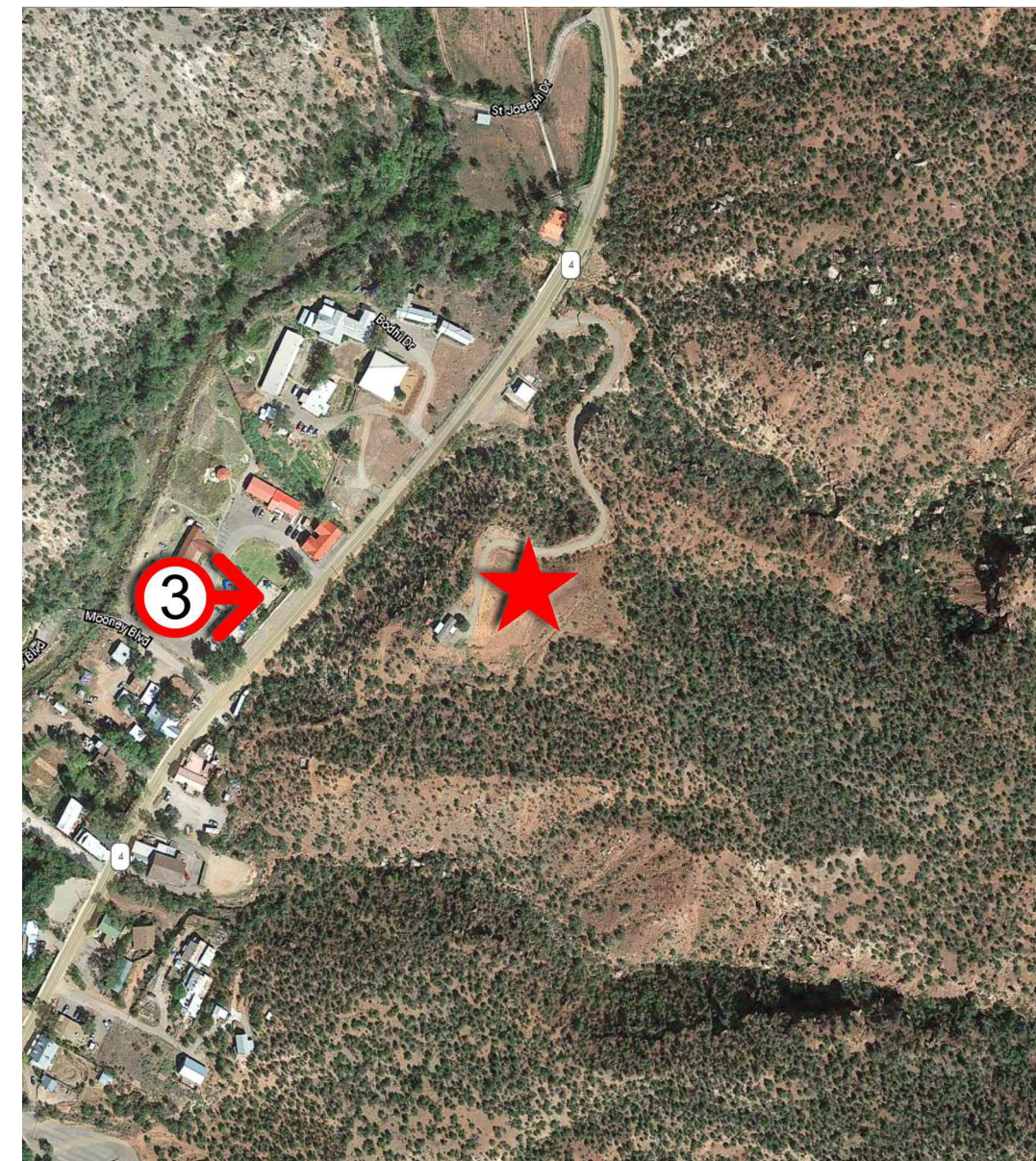
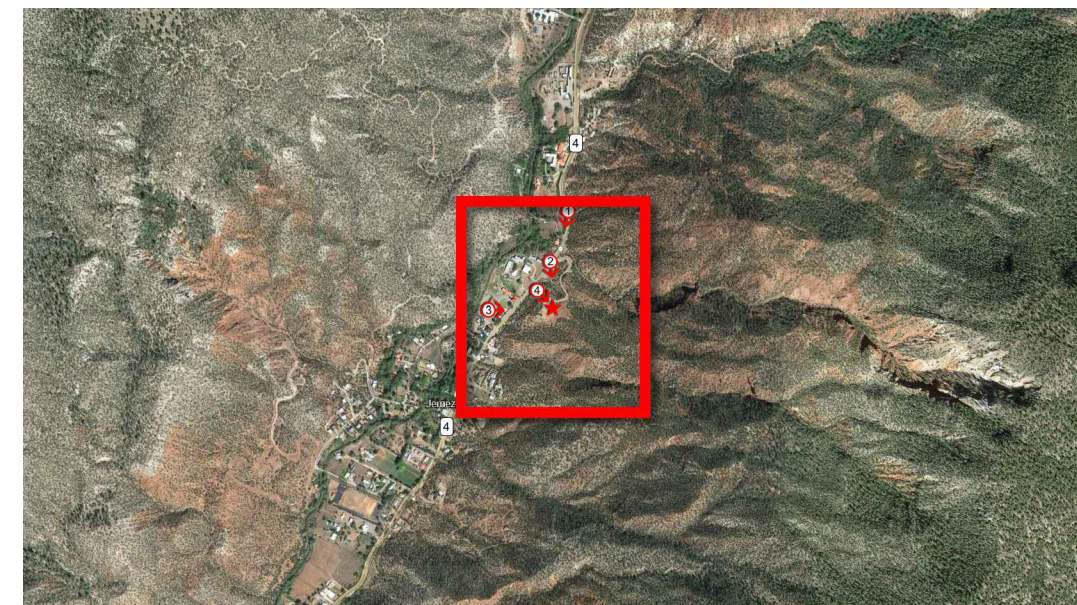
NEW (67'-0" MONOPINE)



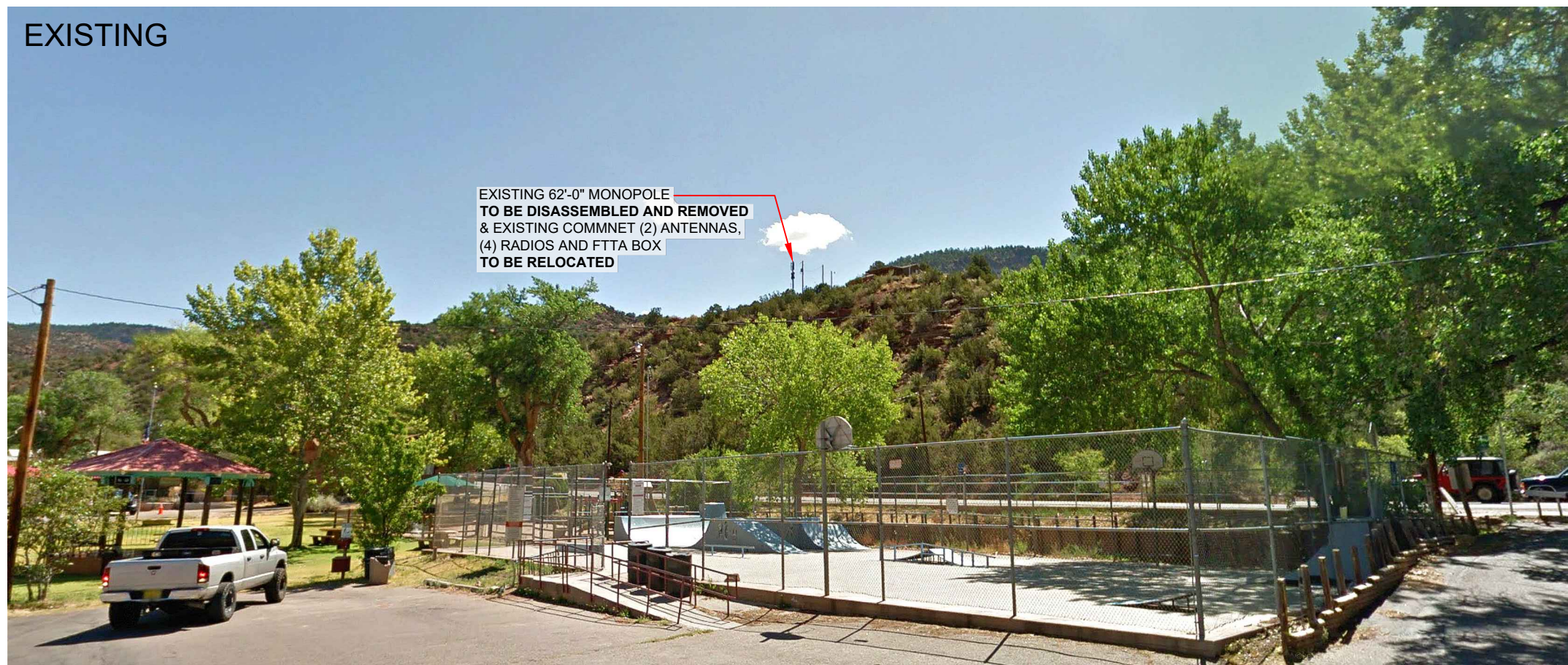
NEW 67'-0" MONOPINE
W/ NEW AT&T (4) ANTENNAS, (4) RADIOS
AND SURGE SUPPRESSOR
& RELOCATED EXISTING COMMNET
(2) ANTENNAS, (4) RADIOS AND FTTA BOX

NOTE:
NEW AT&T ANTENNA / MOUNTS AND
EXISTING COMMNET ANTENNAS
TO BE PAINTED TO MATCH NEW
MONOPINE FOLIAGE COLOR

PHOTOSIMULATION VIEWPOINT 3



EXISTING



EXISTING 62'-0" MONOPOLE
TO BE DISASSEMBLED AND REMOVED
& EXISTING COMMNET (2) ANTENNAS,
(4) RADIOS AND FTTA BOX
TO BE RELOCATED

NEW (67'-0" MONOPINE)



NEW 67'-0" MONOPINE
W/ NEW AT&T (4) ANTENNAS, (4) RADIOS
AND SURGE SUPPRESSOR
& RELOCATED EXISTING COMMNET
(2) ANTENNAS, (4) RADIOS AND FTTA BOX

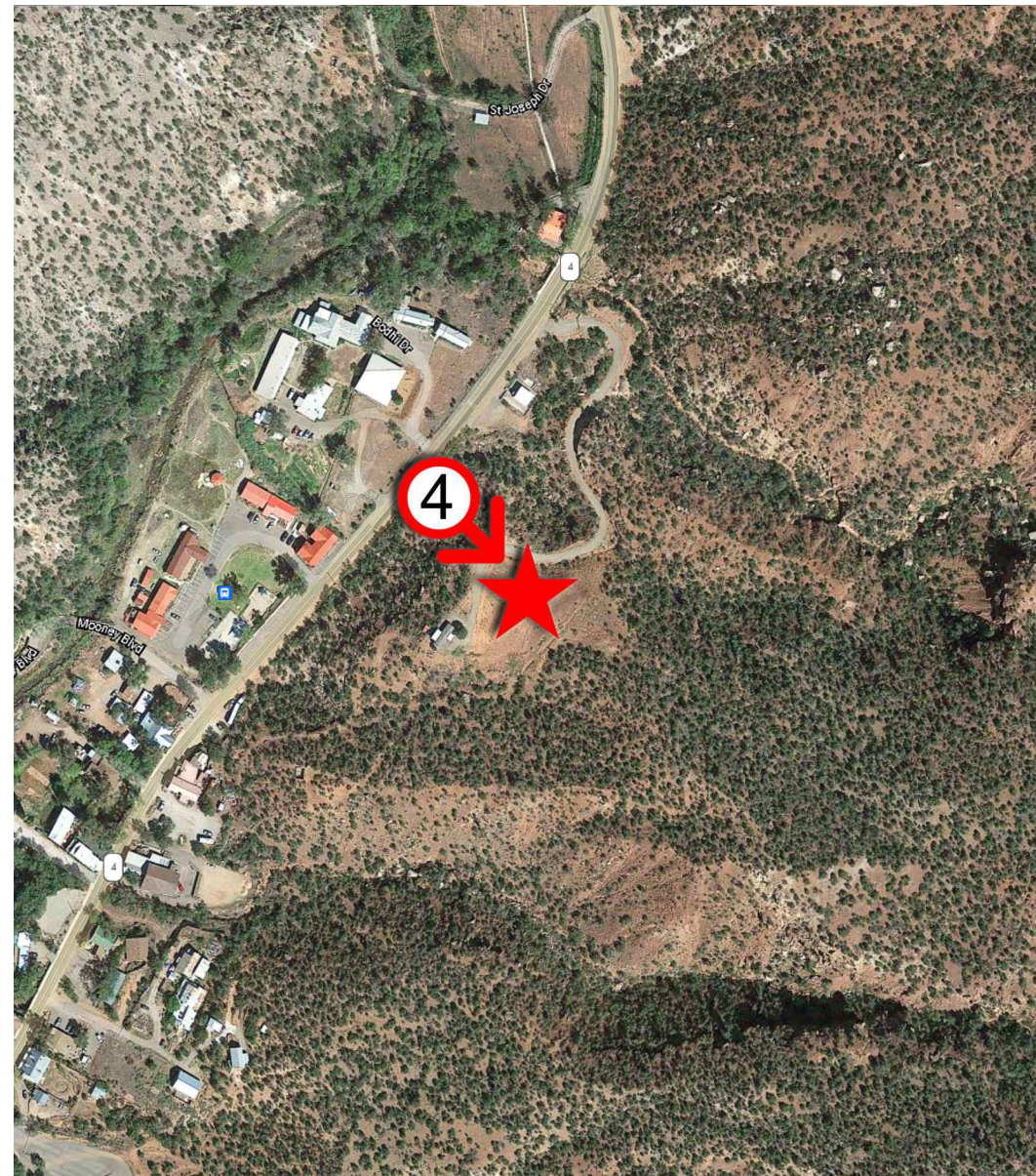
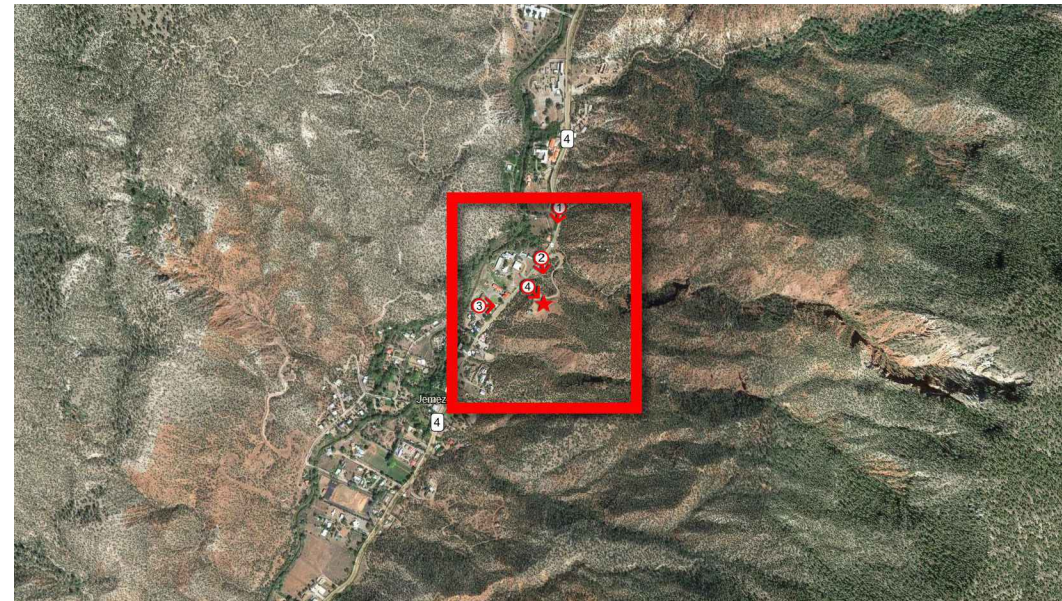
NOTE:
NEW AT&T ANTENNA / MOUNTS AND
EXISTING COMMNET ANTENNAS
TO BE PAINTED TO MATCH NEW
MONOPINE FOLIAGE COLOR

PHOTOSIMULATION VIEWPOINT 4

EXISTING

NEW (67'-0" MONOPINE)

NOTE:
NEW AT&T ANTENNA / MOUNTS AND
EXISTING COMMNET ANTENNAS
TO BE PAINTED TO MATCH NEW
MONOPINE FOLIAGE COLOR



EXISTING 62'-0" MONOPOLE
TO BE DISASSEMBLED AND REMOVED
& EXISTING COMMNET (2) ANTENNAS,
(4) RADIOS AND FTTA BOX
TO BE RELOCATED



NEW 67'-0" MONOPINE
W/ NEW AT&T (4) ANTENNAS, (4) RADIOS
AND SURGE SUPPRESSOR
& RELOCATED EXISTING COMMNET
(2) ANTENNAS, (4) RADIOS AND FTTA BOX